

**Data Sheet**telephone  
949 252 0522

BACK

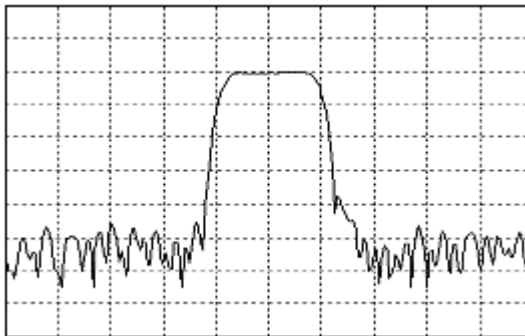
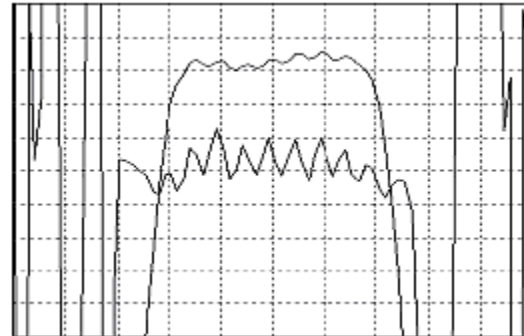
Product Category: IF SAW Filter

Part Number	Package	Application	Last Modified
819-IF190.0M-B	19 x 6.5 SMD	Base Station, Repeater, HDR, IMT-2000	May 22 2003

**TYPE :**

190.0 MHz Bandpass Filter

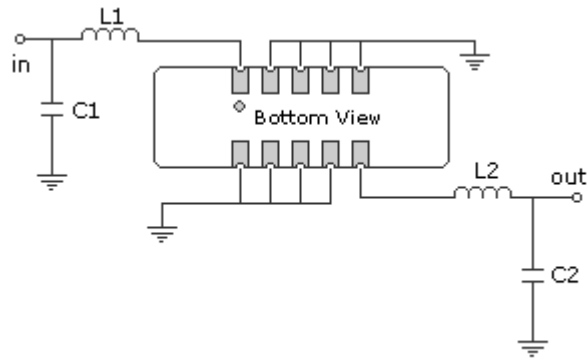
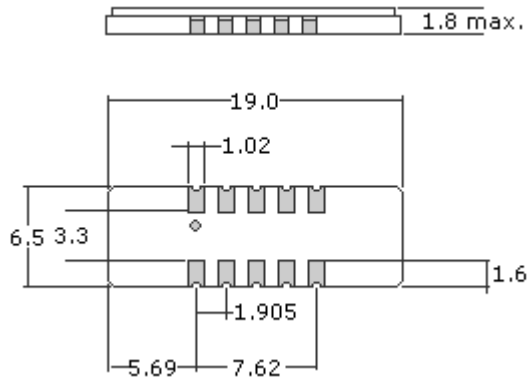
1.10 MHz Bandwidth

**PART NUMBER :****819-IF190.0M-B**Horizontal : 1.0 MHz/Div  
Vertical : 10 dB/DivHorizontal : 0.4 MHz/Div  
Vertical : 1 dB/Div  
Vertical : 100 ns/Div**OPERATING CONDITIONS / ELECTRICAL CHARACTERISTICS**

PARAMETERS	Minimum	Typical	Maximum	Units
Center Frequency	189.95	190.00	190.05	MHz
Insertion Loss	-	17.5	20.0	dB
1dB Bandwidth	1.40	1.50	-	MHz
3dB Bandwidth	1.60	1.70	-	MHz
40dB Bandwidth	-	2.50	2.70	MHz
Passband Ripple (1.23 MHz)	-	0.45	0.60	dB
Group Delay Variation	-	180	220	nsec
Absolute Delay	-	2.54	-	µsec
Ultimate Rejection	40	45	-	dB
Substrate Material	-	Quartz	-	-
Ambient Temperature	-	25	-	°C
Phase Linearity (1.23 MHz)	-	3.4	7.0	deg

\* Custom SAW IF Filters available. Contact Oscilent for assistance.

**PACKAGE OUTLINE (mm)****TEST FIXTURE**



L1 = 56nH                      L2 = 47nH  
 C1 = 24pF                      C2 = 27pF  
 Source/Load Impedance = 50 ohms

**Oscilent Corporation** - CALL **949.252.0522**

**Part No.:** 819-IF190.0M-B

17962 Sky Park Circle, Building D, Irvine, CA 92614, USA  
 Fax: 949.252.0599, E-Mail: Sales@Oscilent.com

Crystal Oscillators | Quartz Crystal | TCXO | VCXO | IF SAW Filter | RF SAW Filter | Ceramic Resonator  
 Crystal Filter | Ceramic Filter | SAW Filter / SAW Devices | Site Map