



**Data Sheet**



Product Category: IF SAW Filter

Part Number  
811-IF85.38M-A

Package  
11.6 x 5.0 SMD

Application  
Mobile Communication

Last Modified  
June 17 2003

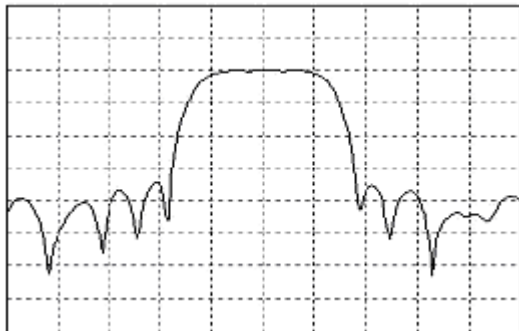
**TYPE :**

85.38 MHz Bandpass Filter  
1.26 MHz Bandwidth

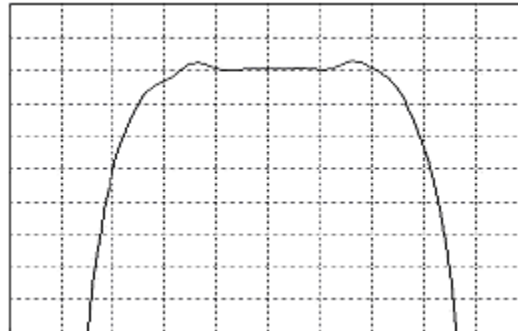


**PART NUMBER :**

**811-IF85.38M-A**



Horizontal : 0.5 MHz/Div  
Vertical : 10 dB/Div



Horizontal : 0.2 MHz/Div  
Vertical : 1 dB/Div

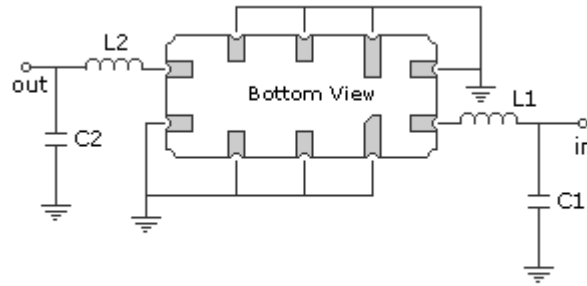
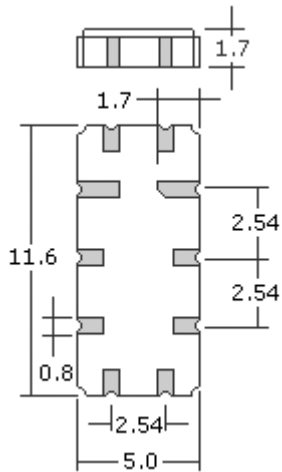
**OPERATING CONDITIONS / ELECTRICAL CHARACTERISTICS**

PARAMETERS	Minimum	Typical	Maximum	Units
Center Frequency	85.36	85.38	85.40	MHz
Insertion Loss	-	10.95	12.5	dB
5dB Bandwidth	1.26	1.31	-	MHz
33dB Bandwidth	-	1.76	1.80	MHz
Attenuation at Fo ± 0.9 MHz	33	38	-	dB
Attenuation at Fo ± 1.25 MHz	33	47	-	dB
Attenuation at Fo ± 1.7 MHz	33	43	-	dB
Passband Ripple	-	0.3	0.7	dB
Ultimate Rejection	35	42	-	dB
Substrate Material	-	Quartz	-	-
Ambient Temperature	-	25	-	°C

\* Custom SAW IF Filters available. Contact Oscilent for assistance.

**PACKAGE OUTLINE (mm)**

**TEST FIXTURE**



L1 = 394.7nH      L2 = 470nH  
 C1 = 75pF      C2 = 62pF  
 Source/Load Impedance = 50 ohms

**Oscilent Corporation** - CALL **949.252.0522**

17962 Sky Park Circle, Building D, Irvine, CA 92614, USA  
 Fax: 949.252.0599, E-Mail: Sales@Oscilent.com

**Part No.:** 811-IF85.38M-A

Crystal Oscillators | Quartz Crystal | TCXO | VCXO | IF SAW Filter | RF SAW Filter | Ceramic Resonator  
 Crystal Filter | Ceramic Filter | SAW Filter / SAW Devices | Site Map