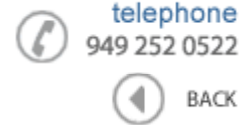




Data Sheet



Product Category: IF SAW Filter

Part Number  
809-IF85.38M-BPackage  
9.1 x 4.8 SMDApplication  
Mobile CommunicationLast Modified  
May 22 2003

## TYPE :

85.38 MHz Bandpass Filter  
1.26 MHz Bandwidth

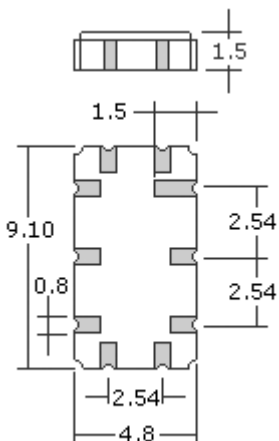
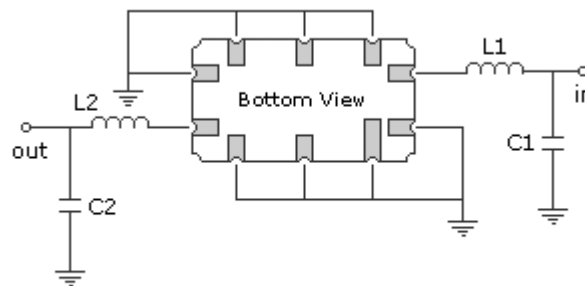
## PART NUMBER :

**809-IF85.38M-B****OPERATING CONDITIONS / ELECTRICAL CHARACTERISTICS**

PARAMETERS	Minimum	Typical	Maximum	Units
Center Frequency	-	85.38	-	MHz
Insertion Loss	-	10.7	12.0	dB
5dB Bandwidth	1.26	1.35	-	MHz
33dB Bandwidth	-	1.65	1.80	MHz
Attenuation at Fo - 0.9 MHz	35	45	-	dB
Attenuation at Fo + 0.9 MHz	35	43	-	dB
Attenuation at Fo ± 1.25 MHz	35	42	-	dB
Attenuation at Fo ± 1.7 MHz	35	43	-	dB
Input / Output Impedance	-	50	-	ohm
Passband Ripple	-	0.5	1.0	dB
Ultimate Rejection	35	40	-	dB
Substrate Material	-	Quartz	-	-
Ambient Temperature	-	25	-	°C
Operating Temperature	-30	-	+80	°C

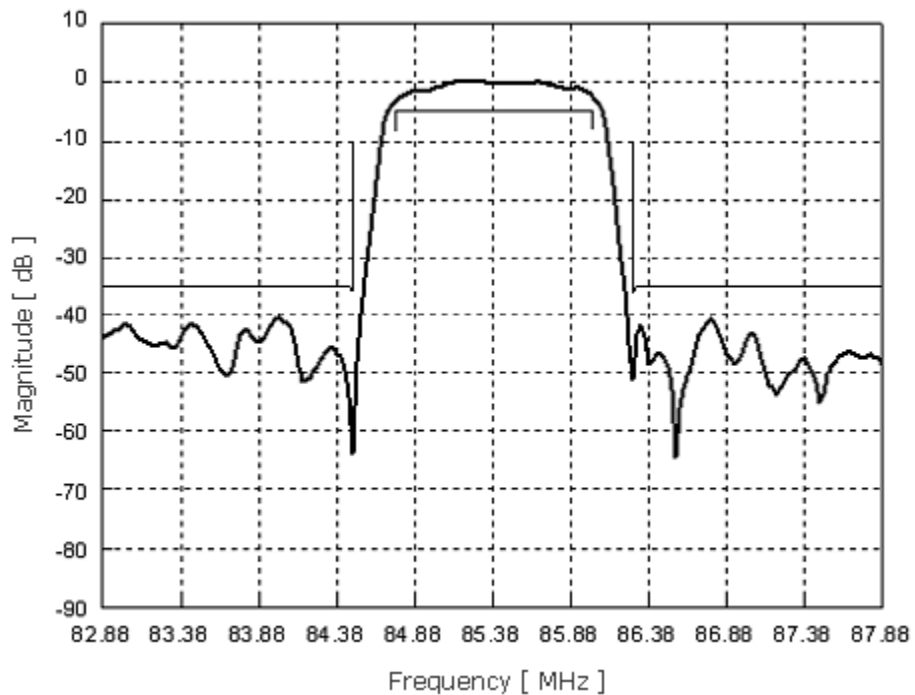
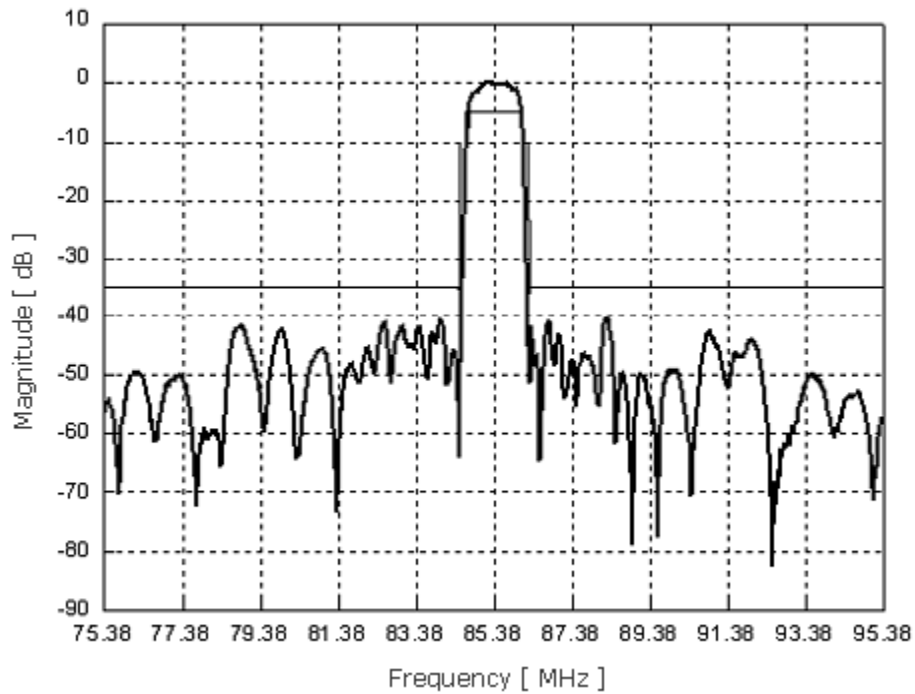
\* All performance include Temperature Variations

\*\* Custom SAW IF Filters available. Contact Oscilent for assistance.

**PACKAGE OUTLINE (mm)****TEST FIXTURE**

L1 = 330nH                      L2 = 390nH  
 C1 = 75pF                        C2 = 82pF  
 Source/Load Impedance = 50 ohms

**FREQUENCY RESPONSE**



**Oscilent Corporation** - CALL **949.252.0522**

**Part No.:** 809-IF85.38M-B

17962 Sky Park Circle , Building D , Irvine , CA 92614 , USA  
Fax: 949.252.0599 , E-Mail: Sales@Oscilent.com