

**Data Sheet**

Product Category: Filters

Series Number	Package	Description	Last Modified
712 ~ 714	UM-1 / UM-5; 4 Pole	Monolithic Dip Type	Jan. 01 2002

**Filter FEATURES**

- Low loss
- High stability for wide temperature ranges
- Sharp cut offs

**OPERATING CONDITIONS / ELECTRICAL CHARACTERISTICS / PART NUMBER GUIDE****GENERAL CHARACTERISTICS**

Operating Temperature Range: -20 ~ 70°C

Mode of Oscillation: 21.40 ~ 30.875 MHz:

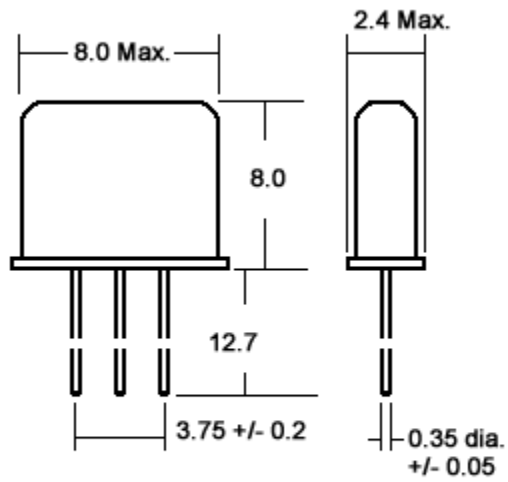
Fundamental

45.0 MHz: 3rd Overtone

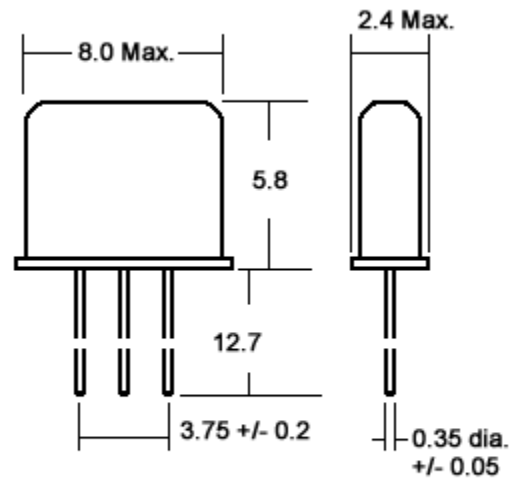
PART NO. (Figure)		Nominal Frequency	Pass Band Width	Stop Band Width	Ripple	Insertion Loss	Terminal Impedance	Pole
UM-1 (1)	UM-5 (2)	MHz	KHz/dB	KHz/dB	dB	dB	Rt/Ct[ohm/pF]	-
<a href="#">712-M07B-1</a>	<a href="#">712-M07B-5</a>	21.40	±3.75/3	±14/40	1.0	2.0	850//5	4
<a href="#">712-M08B-1</a>	<a href="#">712-M08B-5</a>	21.40	±4.0/3	±16/40	1.0	2.0	1000//4	4
<a href="#">712-M12B-1</a>	<a href="#">712-M12B-5</a>	21.40	±6.0/3	±20/40	1.0	2.0	1200//2.5	4
<a href="#">712-M15B-1</a>	<a href="#">712-M15B-5</a>	21.40	±7.5/3	±25/40	1.0	2.0	1500//2	4
<a href="#">712-M15B2-1</a>	<a href="#">712-M15B2-5</a>	21.40	±7.5/3	±30/40	1.0	2.0	1500//2	4
<a href="#">712-M15B3-1</a>	<a href="#">712-M15B3-5</a>	21.40	±7.5/3	±30/40	1.5	3.0	1500//1	4
<a href="#">712-M30B-1</a>	<a href="#">712-M30B-5</a>	21.40	±15.0/3	±50/40	1.0	2.0	3300//0.5	4
<a href="#">712-P07B-1</a>	<a href="#">712-P07B-5</a>	21.60	±3.75/3	±14/40	1.0	2.0	850//5	4
<a href="#">712-P12B-1</a>	<a href="#">712-P12B-5</a>	21.60	±6.0/3	±20/40	1.0	2.0	1200//2.5	4
<a href="#">712-P15B-1</a>	<a href="#">712-P15B-5</a>	21.60	±7.5/3	±25/40	1.0	2.0	1500//2	4
<a href="#">712-T07B-1</a>	<a href="#">712-T07B-5</a>	21.70	±3.75/3	±14/40	1.0	2.0	850//5	4
<a href="#">712-T12B-1</a>	<a href="#">712-T12B-5</a>	21.70	±6.0/3	±20/40	1.0	2.0	1200//2.5	4
<a href="#">712-T15B-1</a>	<a href="#">712-T15B-5</a>	21.70	±7.5/3	±25/40	1.0	2.0	1500//2	4
<a href="#">712-T30B-1</a>	<a href="#">712-T30B-5</a>	21.70	±15.0/3	±50/40	1.0	2.0	3300//0.5	4
<a href="#">713-M15B-1</a>	<a href="#">713-M15B-5</a>	30.875	±7.5/3	±25/40	1.0	2.5	800//4	4
<a href="#">714-M15B-1</a>	<a href="#">714-M15B-5</a>	45.00	±7.5/3	±25/40	1.0	2.5	650//3	4
<a href="#">714-M30B-1</a>	<a href="#">714-M30B-5</a>	45.00	±15.0/3	±40/30	1.0	2.5	800//1.5	4

**NOTE:** Deviations on all parameters available. Please consult Oscilent for details.**DEFINITIONS:** Click on the characteristic names above, for definitions of the particular characteristic.

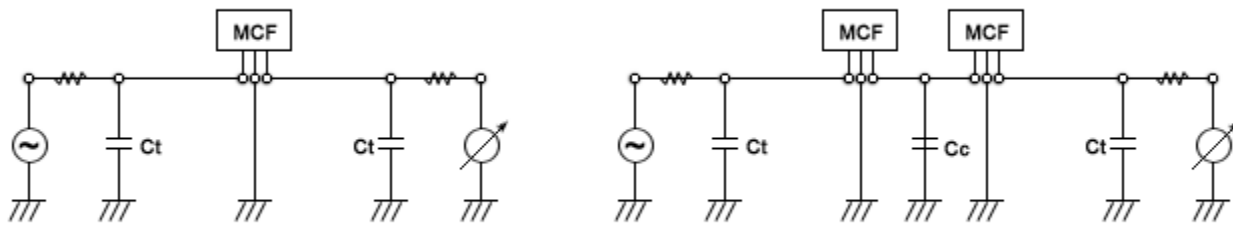
**PACKAGE DIMENSIONS (mm)**



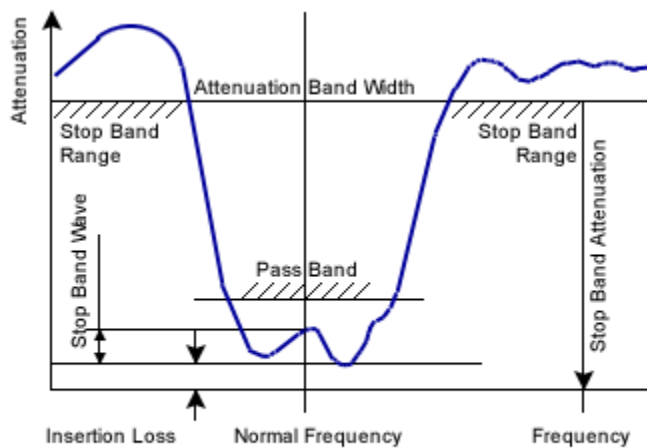
**Figure 1) UM-1**



**Figure 2) UM-5**



**Figure 3) Test Circuits**



**Figure 4) Pass Band Filter Spec-Drawing**

[Crystal Oscillators](#) | [Quartz Crystal](#) | [TCXO](#) | [VCXO](#) | [IF SAW Filter](#) | [RF SAW Filter](#) | [Ceramic Resonator](#)  
[Crystal Filter](#) | [Ceramic Filter](#) | [SAW Filter / SAW Devices](#) | [Site Map](#)