



Data Sheet

Corporation

telephone  
949 252 0522

BACK

Product Category: Filters

Series Number	Package	Description	Last Modified
711	HC-49U / HC-49T	Monolithic Dip Type	Jan. 01 2002

## Filter FEATURES

- Low loss
- High stability for wide temperature ranges
- Sharp cut offs



## OPERATING CONDITIONS / ELECTRICAL CHARACTERISTICS / PART NUMBER GUIDE

### GENERAL CHARACTERISTICS

Operating Temperature Range: -20 ~ 70°C

Mode of Oscillation: Fundamental

PART NO. (Figure)		Nominal Frequency	Pass Band Width	Stop Band Width	Ripple	Insertion Loss	Terminal Impedance	Pole
HC-49U (1)	HC-49T (2)	MHz	KHz/dB	KHz/dB	dB	dB	Rt//Ci[ohm/pF]	-
711-L07A-U	711-L07A-T	10.695	±3.75/3	±20/20	0.5	2.0	1800//5	2
711-L15A-U	711-L15A-T	10.695	±7.5/3	±25/18	0.5	2.0	3000//2	2
711-L20A-U	711-L20A-T	10.695	±10/3	<70/18	0.5	2.0	2--3000	2
711-M07A1-U	711-M07A1-T	10.70	±3.75/3	±18/20	0.5	2.0	1800//5	2
711-M07A2-U	711-M07A2-T	10.70	±3.75/3	±20/20	0.5	2.0	1800//5	2
711-M12A-U	711-M12A-T	10.70	±6.0/3	±20/18	0.5	2.0	3000//3	2
711-M15A-U	711-M15A-T	10.70	±7.5/3	±25/18	0.5	2.0	3000//2	2
711-M20A-U	711-M20A-T	10.70	±10/3	<70/18	0.5	2.0	2--3000	2
711-M30A-U	711-M30A-T	10.70	±15/3	±50/18	0.5	2.0	5500//-	4
711-M07B1-U	711-M07B1-T	10.70	±3.75/3	±14/40	1.0	2.5	1800//4	4
711-M07B2-U	711-M07B2-T	10.70	±3.75/3	±15/40	1.0	2.5	1500//4	4
711-M12B-U	711-M12B-T	10.70	±6.0/3	±20/40	1.0	2.5	2800//1	4
711-M15B1-U	711-M15B1-T	10.70	±7.5/3	±25/40	1.0	2.5	3000//1	4
711-M15B2-U	711-M15B2-T	10.70	±7.5/3	±25/40	1.0	2.5	3000//2	4
711-M15B3-U	711-M15B3-T	10.70	±7.5/3	±27/40	1.5	2.5	2--3000	4
711-M20B-U	711-M20B-T	10.70	±10/3	±34/40	2.0	2.5	2--3000	4
711-M30B-U	711-M30B-T	10.70	±15/3	±50/40	1.0	2.5	5500//1	4

**NOTE:** Deviations on all parameters available. Please consult Oscilent for details.

**DEFINITIONS:** Click on the characteristic names above, for definitions of the particular characteristic.

**PACKAGE DIMENSIONS (mm)**

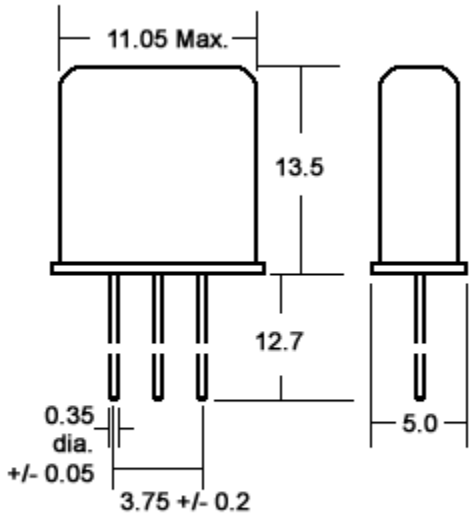


Figure 1) HC-49U

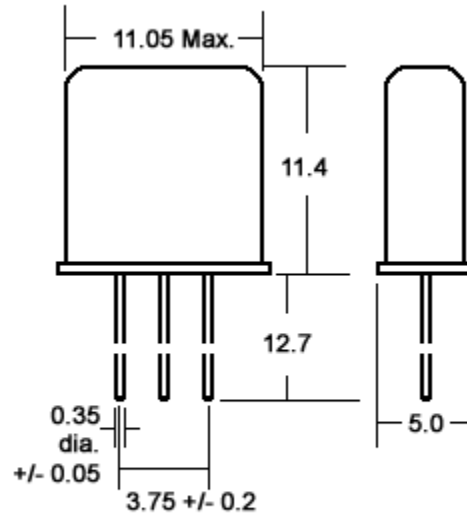


Figure 2) HC-49T

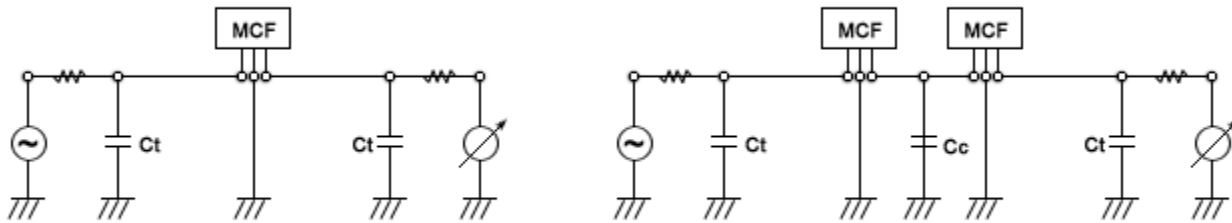


Figure 3) Test Circuits

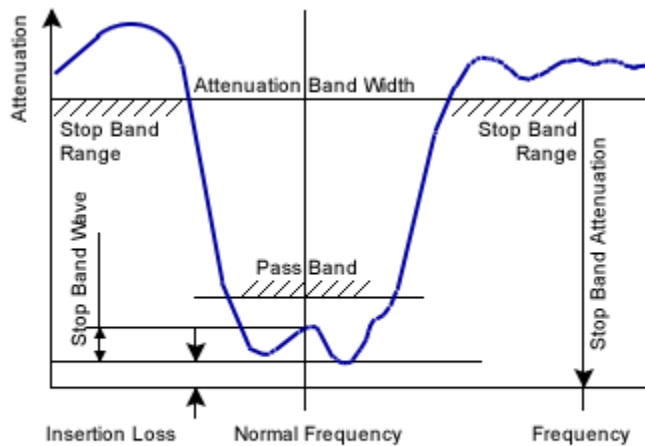


Figure 4) Pass Band Filter Spec-Drawing

**Oscilent Corporation** - CALL **949.252.0522**

**Series No.:** 711

18195 East McDermott Street . Building D . Irvine . CA 92614 . USA  
 Fax: 949.252.0599 . E-Mail: Sales@Oscilent.com

[Crystal Oscillators](#) | [Quartz Crystal](#) | [TCXO](#) | [VCXO](#) | [IF SAW Filter](#) | [RF SAW Filter](#) | [Ceramic Resonator](#)  
[Crystal Filter](#) | [Ceramic Filter](#) | [SAW Filter / SAW Devices](#) | [Site Map](#)