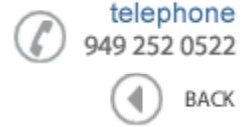




Data Sheet



Product Category: Ceramic Resonator

Series Number
643

Package
F-11 Narrow Band

Description
Two-Port SAW

Last Modified
Jan. 01 2002

FEATURES

- Quartz Stability
- Industry standard package



OPERATING CONDITIONS / ELECTRICAL CHARACTERISTICS

PARAMETERS	SYMBOL	CHARACTERISTICS	UNITS
Center Frequency	F _c	418.0 ~ 434.0 ±0.075	MHz
Insertion Loss	IL	6.0	dB
Unloaded Q	-	13000	-
50 Ohms Loaded Q	-	6000	-
Turnover Temperature	T _o	35	°C
Freq. Temp. Coefficient	FTC	0.037	PPM/°C
Frequency Aging	f _A	10 max. typ.	PPM/Y
DC Insulation Resistance	Between any 2 pins	1 min.	Mohm
Turnover Frequency	F _o	F _c ±21	KHz
Operating Temperature	T _{OPR}	-10 to +60	°C
Package	-	F-11	-

PACKAGE DIMENSIONS (mm)

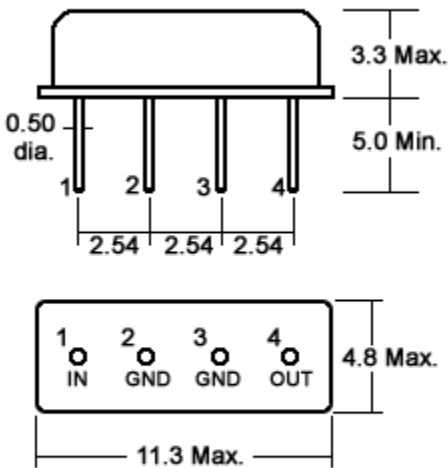


Figure 1) Side, and Bottom Views

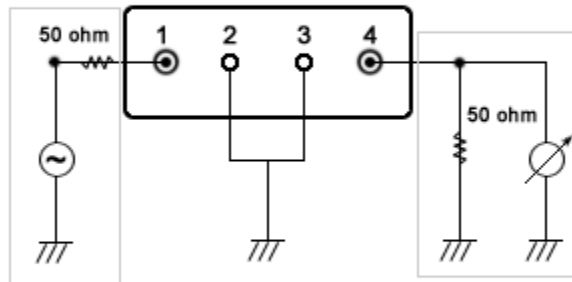


Figure 2) Test Circuit

PART NUMBER GUIDE

Part Number	Frequency
643-418.0M	418.0 MHz
643-433.42M	433.42
643-434.0M	434.0

NOTE: Deviations on all parameters available. Please consult Oscilent for details.

DEFINITIONS: Click on the characteristic names above, for definitions of the particular characteristic.

Oscilent Corporation - CALL **949.252.0522**

Series No.: **643**

17962 Sky Park Circle , Building D , Irvine , CA 92614 , USA
Fax: 949.252.0599 , E-Mail: Sales@Oscilent.com

[Crystal Oscillators](#) | [Quartz Crystal](#) | [TCXO](#) | [VCXO](#) | [IF SAW Filter](#) | [RF SAW Filter](#) | [Ceramic Resonator](#)
[Crystal Filter](#) | [Ceramic Filter](#) | [SAW Filter / SAW Devices](#) | [Site Map](#)