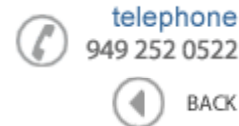




**Data Sheet**



Product Category: Filters

Series Number	Package	Description	Last Modified
746	SMD Ceramic Filter	455 KHz	Jan. 01 2011

**Filter FEATURES**

- Surface Mount
- RoHS Compliant



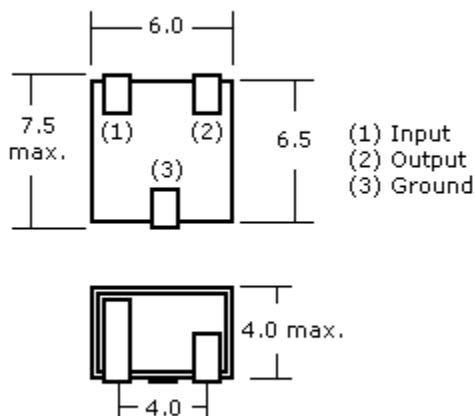
**OPERATING CONDITIONS / ELECTRICAL CHARACTERISTICS / PART NUMBER GUIDE**

PART NO.	6dB Bandwidth	40dB Bandwidth	Pass Band Ripple	Spurious Attenuation fn ±100KHz	Insertion Loss	In/Output Impedance
	KHz min.	KHz max.	dB max.	dB min.	dB max.	Kohm
746-455-BU	±15	±30	2	27	4	1
746-455-CU	±12.5	±25	2	27	6	1.5
746-455-DU	±10	±20	2	27	4	1.5
746-455-EU	±7.5	±15	2	27	6	1.5
746-455-FU	±6	±12	2	27	6	1.5
746-455-GU	±4.5	±10	2	25	6	1.5
746-455-HU	±3	±9	2	25	6	1.5
746-455-IU	±2	±7.5	2	25	6	1.5

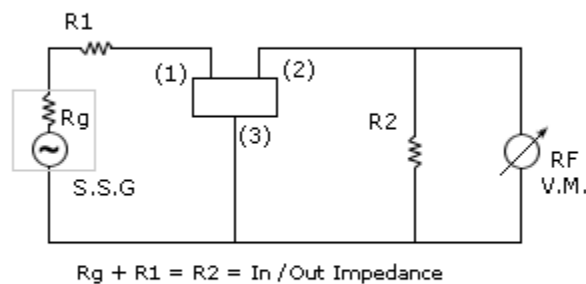
**NOTE:** Deviations on all parameters available. Please consult Oscilent for details.

**DEFINITIONS:** Click on the characteristic names above, for definitions of the particular characteristic.

**PACKAGE DIMENSIONS (mm)**



**Test Circuit**



**Oscilent Corporation** - CALL **1.949.252.0522**

**Series No.:** [746](#)

18226 McDermott Street , Building B , Irvine , CA 92614 , USA  
Fax: 1.949.252.0599 , E-Mail: [Sales@Oscilent.com](mailto:Sales@Oscilent.com)

---

[Crystal Oscillators](#) | [Quartz Crystal](#) | [TCXO](#) | [VCXO](#) | [IF SAW Filter](#) | [RF SAW Filter](#) | [Ceramic Resonator](#)  
[Crystal Filter](#) | [Ceramic Filter](#) | [SAW Filter / SAW Devices](#) | [Site Map](#)