



Data Sheet



Product Category: Filters

Series Number	Package	Description	Last Modified
736	Ceramic LT/U	455 KHz 4 Element	Jan. 01 2008

## Filter FEATURES

- AM use
- IF filter
- 4 element
- RoHS Compliant



### OPERATING CONDITIONS / ELECTRICAL CHARACTERISTICS / PART NUMBER GUIDE

PART NO.	6dB Bandwidth	40dB Bandwidth	Pass Band Ripple	Spurious Attenuation fn ±100KHz	Insertion Loss	In/Output Impedance
	KHz min.	KHz max.	dB max.	dB min.	dB max.	Kohm
736-459-AU	±17	±40	2	28	4	1
736-459-BU	±15	±30	2	28	4	1.5
736-459-CU	±12.5	±24	2	28	4	1.5
736-459-DU	±10	±20	2	28	4	1.5
736-459-EU	±7.5	±15	2	28	6	1.5
736-459-FU	±6	±12.5	2	28	6	2
736-459-GU	±4.5	±10	2	28	6	2
736-459-HU	±3	±9	2	28	6	2
736-459-IU	±2	±7.5	2	28	6	2
736-459-HT	±3	±9	2	35	6	2

**NOTE:** Deviations on all parameters available. Please consult Oscilent for details.

**DEFINITIONS:** Click on the characteristic names above, for definitions of the particular characteristic.

## PACKAGE DIMENSIONS (mm)

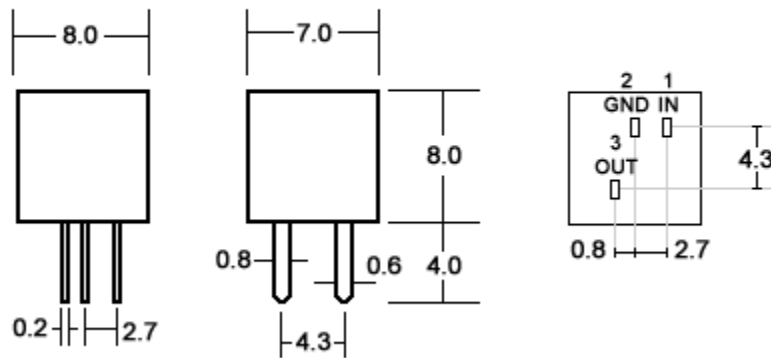


Figure 1) Front and Side Views

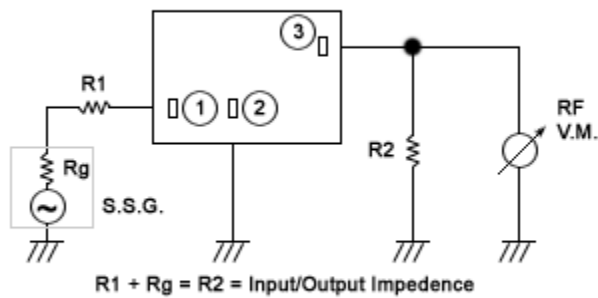


Figure 2) Measuring Circuit

**Oscilent Corporation** - CALL **949.252.0522**  
 18195 East McDermott Street . Building D . Irvine . CA 92614 . USA  
 Fax: 949.252.0599 . E-Mail: Sales@Oscilent.com

Series No.: 736